

LINE NO.	DWG REF./CSI SEC.	ITEM DESCRIPTION	UNIT OF MEASURE	QUANTITY	MATERIAL		LABOR				LINE TOTAL	TRADE TOTAL
					UNIT PRICE	TOTAL COST	UNIT LABOR HOUR	LABOR RATE	UNIT PRICE	TOTAL COST		
	DIV. 01	GENERAL REQUIREMENTS										\$ -
1		PERMITS, SITE SUPERVISION, FINAL CLEANUP & DUMPSTER	LS	1								
	DIV. 04	MASONRY										\$ 3,272,102
		JAIL BUILDING										
		CMU WALL										
		FIRST LEVEL										
2	AE111.1- AE111.4	8" Thick CMU Wall - #4 Vertical rebar @ 8" O.C - Fully Grouted	SF	43892	\$4.56	\$200,131.13	0.160	\$96.88	\$15.50	\$680,328.48	\$880,459.61	
3		6" Thick CMU Wall - #4 Vertical rebar @ 8" O.C - Fully Grouted	SF	945	\$3.66	\$3,458.97	0.145	\$96.88	\$14.05	\$13,275.98	\$16,734.95	
		SECOND LEVEL										
4	AE112.3, AE112.4	8" Thick CMU Wall - #4 Vertical rebar @ 8" O.C - Fully Grouted	SF	6710	\$4.56	\$30,596.08	0.160	\$96.88	\$15.50	\$104,008.72	\$134,604.80	
		TOP OF CELL										
5	AE113.3, AE113.4	8" Thick CMU Wall - #4 Vertical rebar @ 8" O.C - Fully Grouted	SF	2102	\$4.56	\$9,584.25	0.160	\$96.88	\$15.50	\$32,580.85	\$42,165.10	
		CORNER BLOCK										
6	AE111.1- AE201	4"x8"x24" Return Corner Block	EA	936	\$9.78	\$9,155.98	0.350	\$96.88	\$33.91	\$31,736.25	\$40,892.23	
		VENEER										
7		4" Thick Brick Veneer - With Masonry Ties	SF	10210	\$14.79	\$151,012.88	0.174	\$96.88	\$16.86	\$172,099.45	\$323,112.33	
8	AE201	4" Thick Stone Veneer - With Masonry Ties	SF	2463	\$24.38	\$60,041.75	0.180	\$96.88	\$17.44	\$42,952.57	\$102,994.32	
		BOND BEAM										
9	AE111.1- AE201	8"x8" CMU Bond Beam	LF	1017	\$8.51	\$8,657.33	0.230	\$96.88	\$22.28	\$22,660.03	\$31,317.37	
		GROUT FILL										
10	AE111.1- AE201	Grout Fill For 8" Thick CMU Wall	CY	200	\$203.50	\$40,756.78	2.500	\$96.88	\$242.19	\$48,505.07	\$89,261.85	
11	AE111.1- AE201	Grout Fill For 6" Thick CMU Wall	CY	3	\$203.50	\$577.53	2.500	\$96.88	\$242.19	\$687.33	\$1,264.86	
		MORTAR										

Page 1

LINE NO.	DWG REF./CSI SEC.	ITEM DESCRIPTION	UNIT OF MEASURE	QUANTITY	MATERIAL		LABOR				LINE TOTAL	TRADE TOTAL
					UNIT PRICE	TOTAL COST	UNIT LABOR HOUR	LABOR RATE	UNIT PRICE	TOTAL COST		
	DIV. 01	GENERAL REQUIREMENTS										\$ -
1		PERMITS, SITE SUPERVISION, FINAL CLEANUP & DUMPSTER	LS	1								
	DIV. 04	MASONRY										\$ 3,272,102
		JAIL BUILDING										
		BOND BEAM										
9	AE111.1-AE201	8"x8" CMU Bond Beam	LF	1017	\$8.51	\$8,657.33	0.230	\$96.88	\$22.28	\$22,660.03	\$31,317.37	
		GROUT FILL										
10	AE111.1-AE201	Grout Fill For 8" Thick CMU Wall	CY	200	\$203.50	\$40,756.78	2.500	\$96.88	\$242.19	\$48,505.07	\$89,261.85	
11	AE111.1-AE201	Grout Fill For 6" Thick CMU Wall	CY	3	\$203.50	\$577.53	2.500	\$96.88	\$242.19	\$687.33	\$1,264.86	
		MORTAR										
12	AE111.1-AE201	Type 'M' Or 'S' Mortar For 8" Thick CMU Wall	CY	326	\$225.50	\$73,400.74	2.800	\$96.88	\$271.25	\$88,292.47	\$161,693.21	
13	AE111.1-AE201	Type 'M' Or 'S' Mortar For 6" Thick CMU Wall	CY	4	\$225.50	\$987.61	2.800	\$96.88	\$271.25	\$1,187.97	\$2,175.58	
		REINFORCEMENT										
14	AE111.1-AE201	8" Thick Wall Horizontal Joint Reinforcement Shall be; - 9 Gauge Steel Longitudinal Rods W/Standard Ladder @ 16" O.C	LF	85655	\$9.64	\$825,714.20	0.040	\$96.88	\$3.88	\$331,913.13	\$1,157,627.33	
15	AE111.1-AE201	6" Thick Wall Horizontal Joint Reinforcement Shall be; - 9 Gauge Steel Longitudinal Rods W/Standard Ladder @ 16" O.C	LF	1417	\$9.64	\$13,659.88	0.040	\$96.88	\$3.88	\$5,490.88	\$19,150.76	
		SILL										
16	AE201	8"x5-1/2" Cast Stone Sill	LF	466	\$34.49	\$16,070.11	0.200	\$96.88	\$19.38	\$9,028.75	\$25,098.86	
		CONTROL JOINT										
17	AE201	Masonry Control Joint	LF	300	\$2.66	\$798.13	0.080	\$96.88	\$7.75	\$2,326.32	\$3,124.45	
		MAINTENANCE BUILDING										
		CMU WALL										
18	AE141	8" Thick CMU Wall - #4 Vertical rebar @ 8" O.C - Fully Grouted	SF	3260	\$4.56	\$14,864.83	0.160	\$96.88	\$15.50	\$50,531.71	\$65,396.54	
		CORNER BLOCK										
19	AE141	4"x8"x24" Return Corner Block	EA	102	\$1.61	\$164.63	0.350	\$96.88	\$33.91	\$3,458.44	\$3,623.07	
		BOND BEAM										
20	AE141	8"x8" CMU Bond Beam	LF	304	\$8.51	\$2,587.84	0.230	\$96.88	\$22.28	\$6,773.50	\$9,361.34	
		VENEER										
		4" Thick Brick Veneer										

Page 1

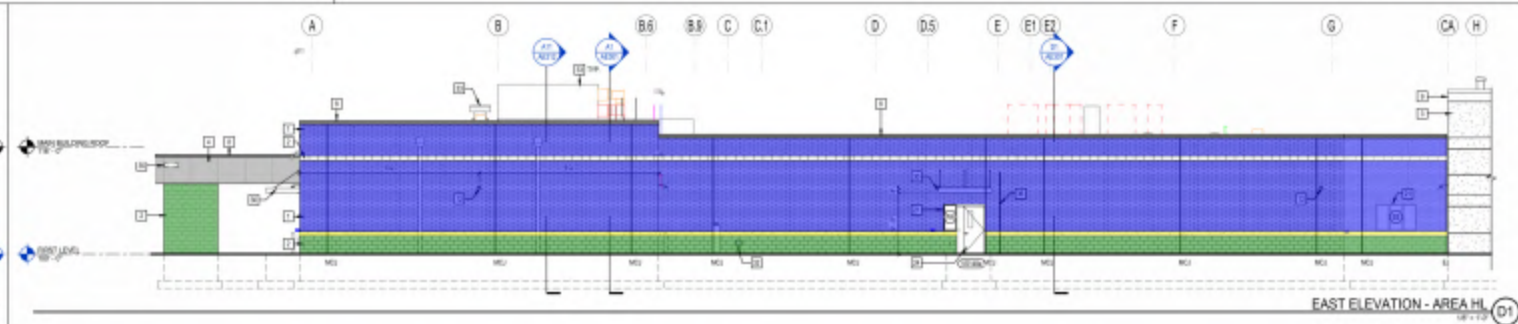
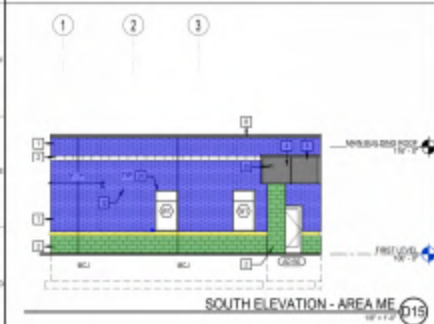
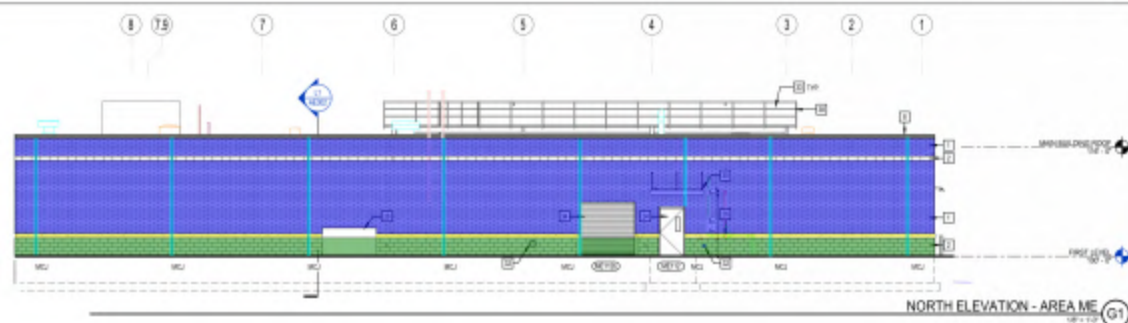
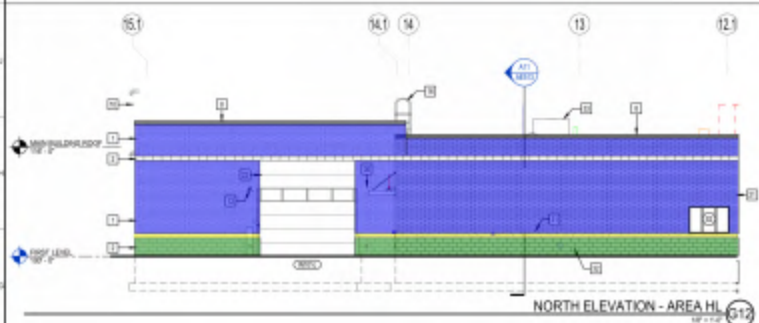
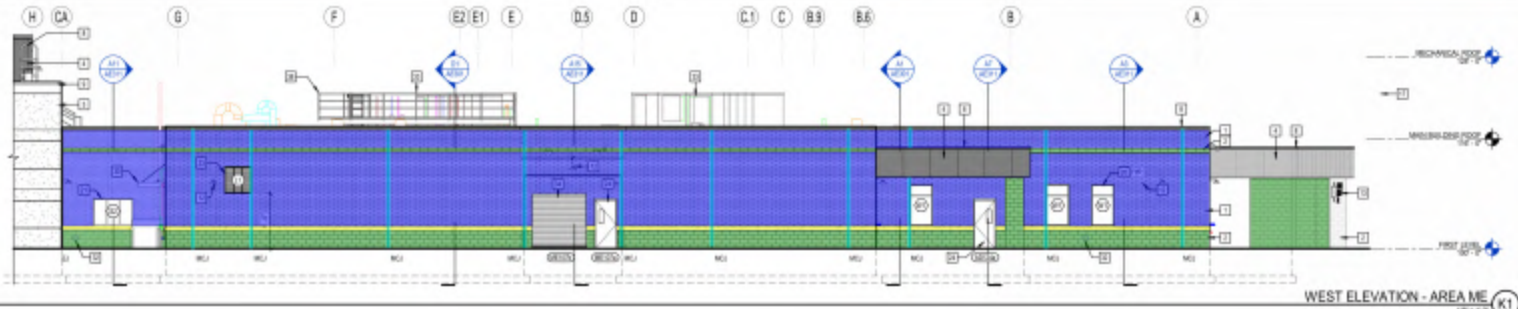


- 8"x5-1/2" Stone Sill
- 4" Thick Brick Veneer
- 4" Thick Stone Veneer
- Masonry Control Joint

751.6 FT
10209.8 SQ FT
2463.2 SQ FT
300.2 FT

- ### EXTERIOR ELEVATION GENERAL NOTES
1. PANEL & SILL DIMENSIONS ARE SHOWN TO CENTER LINE OF JOINT BETWEEN PANELS AND SILL, UNLESS OTHERWISE NOTED.
 2. PANEL JOINT BETWEEN PANELS SHALL BE 8" WIDE.
 3. SEE DETAIL FOR RELATIONSHIP BETWEEN TOP OF CONCRETE PANELS AND BOTTOM OF SILL.
 4. SILL, BRICK, AND STONE VENEER ARE CENTERED WITH PANEL. UNLESS OTHERWISE SPECIFIED.
 5. ALL MATERIALS SHALL BE AS SHOWN UNLESS OTHERWISE NOTED.
 6. THE LOCATION OF EACH SERVICE, EQUIPMENT, AND ACCESS SHALL BE AS SHOWN FOR LIGHTING AND ELECTRICAL.
 7. DETAIL, MATERIAL, AND FINISH SHALL BE AS SHOWN UNLESS OTHERWISE NOTED.
 8. SEE SPECIFICATIONS FOR PREPARATION OF WALL, MASONRY SURFACE FOR INSTALLATION OF EXTERIOR FINISHES. ALL SURFACES SHALL BE CLEANED TO BE ACCEPTED FOR EXTERIOR WALL FINISHES.
 9. PROVIDE MASONRY CONTROL JOINTS AT ALL MAJOR MASONRY CORNERS.
 10. SEE PLAN SHEET FOR PRECAST PANELS & TYPICAL PRECAST JOINT, CORNER JOINT, LAPPED SILL, ETC.

- ### EXTERIOR FINISH LEGEND
- | | | | | |
|--|---|--|-------------------------------------|--|
| 1. MASONRY BRICK - 1 | 11. PREPARED METAL PANEL SYSTEM - 1 | 21. ROOF ACCESS LADDER | 31. OPERATOR WALKWAY METAL DECKING | 41. EXTERIOR WIRE AND CONDUIT RACKING |
| 2. MASONRY BRICK - 2 | 12. PREPARED METAL PANEL SYSTEM - 2 | 22. JOINT FLASHING REFER TO PLAN | 32. IMPROVED MASONRY BRICKWORK | 42. ROOF TOP MECHANICAL SYSTEM REFER TO MECHANICAL |
| 3. PRE-CAST CONCRETE | 13. SECURITY CAMERA REFER TO TECHNICAL SECURITY | 23. JOINT SEALANT | 33. IMPROVED ALUMINUM HANDED WINDOW | 43. COLAS 3000/4000, GALVATED |
| 4. COMPRESSED METAL PANEL | 14. SECURITY CAMERA REFER TO TECHNICAL SECURITY | 24. PANEL ADJUSTED LIGHT FIXTURE REFER TO ELECTRICAL | 34. IMPROVED ALUMINUM HANDED WINDOW | 44. ROOF FLASHING |
| 5. STAINLESS STEEL ARCH & BRD SCREEN | 15. SECURITY CAMERA REFER TO TECHNICAL SECURITY | 25. PANEL ADJUSTED LIGHT FIXTURE REFER TO ELECTRICAL | 35. IMPROVED ALUMINUM HANDED WINDOW | 45. PERIMETER FINISH REFER TO CIVIL |
| 6. MASONRY CONTROL JOINT 1/2" W/ 3/8" CONCRETE 2" W/ 3/8" SPACER | 16. EXTERIOR ALUMINUM SHOWER NOSE | 26. EXTERIOR ALUMINUM SHOWER NOSE | 36. IMPROVED ALUMINUM HANDED WINDOW | 46. PRECAST METAL |
| 7. MCJ | 17. EXTERIOR ALUMINUM SHOWER NOSE | 27. EXTERIOR ALUMINUM SHOWER NOSE | 37. IMPROVED ALUMINUM HANDED WINDOW | 47. MECHANICAL PLUMBING AND |
| 8. E | 18. EXTERIOR ALUMINUM SHOWER NOSE | 28. EXTERIOR ALUMINUM SHOWER NOSE | 38. IMPROVED ALUMINUM HANDED WINDOW | |
| | 19. EXTERIOR ALUMINUM SHOWER NOSE | 29. EXTERIOR ALUMINUM SHOWER NOSE | 39. IMPROVED ALUMINUM HANDED WINDOW | |
| | 20. EXTERIOR ALUMINUM SHOWER NOSE | 30. EXTERIOR ALUMINUM SHOWER NOSE | 40. IMPROVED ALUMINUM HANDED WINDOW | |



GENESEE COUNTY
25 Main Street
Sutton, NY 14230
CLERK

SMRT
Architecture • Engineering • Planning
SMRT Architects and Engineers
400 State Street, 25th Floor
Schenectady, New York 12305
518.767.7868
www.smrtny.com

HUNT
Civil Engineer
4 Commercial Street, Suite 300
Rochester, New York 14603
585.227.7860

SWBR
Landscape Architect
387 East Main Street
Rochester, New York 14608
585.252.8800

SJ
Floor Service Consulting
Kitcher & Landis Consultant
2340 Denning Street
Rochester, NY 14604
585.783.5332

Mead & Hunt
Security Threats and Solutions
2340 Denning Street
Rochester, NY 14604
585.784.7372



IF IT IS A VIOLATION OF THE LAWS OF THE STATE OF NEW YORK FOR ANY PERSON OR PERSONS UNDER THE DIRECTION OF A LICENSED PROFESSIONAL ARCHITECT OR ENGINEER TO AUTHORIZE THIS DRAWING, IF THE DRAWING IS A TOTAL, THE ARCHITECT OR ENGINEER SHALL SIGN THIS DRAWING WITH THE NOTATION "AUTHORIZED BY" FOLLOWED BY THEIR SIGNATURE, DATE AND DESCRIPTION OF THE ALTERATION.

REV	DESCRIPTION	DATE

ISSUED FOR BID
01-31-2022

GENESEE COUNTY
GENESEE COUNTY JAIL
WEST MAIN STREET ROAD, BETWEEN NY 1422
EXTERIOR ELEVATIONS

SHEET 15.0
SCALE: AS SHOWN
PROJECT NUMBER: 151
DATE OF RECORD: 02/14/2022
JOB OFFICE: 151
DRAWN BY: 151
CHECKED BY: 151
DATE: 01/31/2022

AE201

NOT FOR CONSTRUCTION

